

The Institute of Clerks of Works and  
Construction Inspectorate of GB

*Hosted by the North East Chapter  
The Copthorne Hotel  
Newcastle Upon Tyne*

# Building on Quality Awards 2013



Saturday 27th April 2013

# The Institute of Clerks of Works and Construction Inspectorate welcomes nominees and guests to the Building on Quality Awards 2013; wishing you all a most enjoyable evening.

The Institute was formed in 1882 and over the years has continued to represent the professional and technical interests of Clerks of Works. Over more recent years, it has been recognised that there are many professionals within the industry that carry out the role under varying job titles.



The role, to this day, is based on impartiality; ensuring that the Client (rather than the Contractor) is able to achieve value for money through rigorous and detailed inspection of materials and workmanship throughout the build process.

For further information about the Institute or to request an information pack, please contact ICWCI

Headquarters:

ICWCI

Registered Offices: 28 Commerce Road,  
Lynch Wood, Peterborough, PE2 6LR

Tel: 01733 405160

Email: [info@icwci.org](mailto:info@icwci.org)

Website: [www.icwci.org](http://www.icwci.org)

A Company Limited by Guarantee  
Registered in England Number 76803

**On behalf of Meredith Whilden FICWCI  
ICWCI Director and Chairman of the Building on Quality Awards**

**Welcome to the ICWCI  
Building on Quality Awards 2013**

The aim of these Awards is not only to recognise the skills of the individual Clerks of Works / Construction Inspectors involved in the projects, but also to promote and recognise the discipline itself and the continuing need for it in the modern construction industry. To this end, entry is open to all that carry out the inspection function on behalf of the client, and is not restricted to members of the Institute.

Your attendance and support for this event helps us to achieve this and we welcome you here this evening.

## *The Judges*



**Meredith Whilden  
FICWCI**



**John Ruddell  
FICWCI**



**Graham McLeod  
FICWCI**

COMMERCIAL  
SERVICES





PROJECT  
MANAGEMENT



CARBON  
MANAGEMENT



SUSTAINABILITY



**Faithful+Gould is one of the largest and most experienced project management and cost consultants operating within the North East.**

Faithful+Gould provides a diverse range of project and cost management solutions to both private and public sector clients. From mixed-use schemes, to major retail, banking and leisure schemes, private residential, social housing portfolios, health and education establishments we have the expertise and experience to leverage value, maximise certainty and guarantee delivery.

We pride ourselves on collaborating with client teams and developing long-term relationships. Employing over 2,000 staff globally and 150 highly qualified and passionate staff locally, Faithful+Gould is able to draw upon global knowledge and provide local expertise, to ensure that the highest quality of service is delivered to our clients.

For more than 60 years, Faithful+Gould has focussed on adding real value and enhancing returns on investment through exceptional levels of service and expertise in project and programme support services. Our commercial management skills and approaches are developed to deliver value adding solutions, from the initial concept, right through to completion.

**Faithful+Gould**  
Albany Court  
Monarch Road  
Newcastle Business Park  
Newcastle upon Tyne  
NE4 7YB  
Tel: +44 (0)191 272 5150



## Don't risk the future of your company for the sake of an insurance premium

With over 45 years total experience working with various professionals. We pride ourselves on understanding your industry. **Kerry London Professional Risks Division** has the ability to underwrite in-house, ensuring that the highest service standards are always met at a cost that makes good business sense.

**We specialise in:**

- **Professional Indemnity** • **Directors & Officers Liability** • **Office Combined Package**

To find out more and to discuss your particular requirements, please contact the **Professional Risks Team on 020 7623 4957**

2nd Floor, John Stow House, 18 Bevis Marks, London, EC3A 7JB. Email: [pi@kerrylondon.co.uk](mailto:pi@kerrylondon.co.uk) [www.kl-insurance.co.uk](http://www.kl-insurance.co.uk)  
Kerry London Ltd is authorised and regulated by the Financial Services Authority. Registered Office: 2nd Floor John Stow House, 18 Bevis Marks, London EC3A 7JB. Registered No. 02006558 (England).

# PLANT & PUMPS

## Hire, Sales, Parts & Service



**Selwood provides the complete plant & pump, hire, sales & service package for a wide range of equipment.**

Excavators, dumpers, rollers, compressors, telehandlers, 1" to 12" surface and submersible pumps - in fact all the plant and pumping equipment you need is available at **Selwood**.

**For Your Local Newcastle Branch Call 0191 410 8400**

**Branches Nationwide**  
**[www.selwood.co.uk](http://www.selwood.co.uk)**



# *The Finalists*

*Florian Gertz MICWCI*

*City of Westminster Magistrates Court*

*Hans Maak MICWCI*

*Dunfermline High School*

*Martin McAdam MICWCI*

*All Saints / Rochsolloch Primary School*

*Iain Morrison MICWCI*

*Calderbridge Primary / Nursery School*

*Anthony Docherty MICWCI*

*'Anderston' Phase 1*

*John Longbottom FICWCI*

*Turner Contemporary Gallery*

*John Robert Hanna FICWCI* *New Science Centre, Staffordshire University*

*Stephen Telford MICWCI*

*Tyne Tunnel Crossing*

*Anthony Hunter FICWCI* *Institute of Transplantation, Freeman Hospital*

*Mark Heggs MICWCI*

*Manor Road Sports Facility*

*Roy Beer MICWCI*

*BG Futures, Bishop Grosseteste University*

*Carol Heidschuster MICWCI*

*South West Turret, Lincoln Cathedral*

*Colin Pearson FICWCI*

*School of Humanities, University of Cambridge*

*Tony Smith FICWCI*

*Taff Bargoed Park and Lakes*

*James E Haughian MICWCI*

*Jordonstown School*

*Frank Miller MICWCI*

*Twin Sails Bridge*

*Gilly Carr FICWCI*

*Les Beacamps High School*



FLORIAN  
GERTZ  
MICWCI

## ***City of Westminster Magistrates Court***



The main features of the new building included ten Courtrooms over three floors, each with a secure dock and video link capability. There are secure holding areas next to court rooms. Public waiting areas and offices are situated on all levels.

Secant-piled retaining walls on three sides. In-situ post tensioned concrete slab with embedded cooling coils linked to 2 boreholes each 130m deep for aquifer coupled free cooling.

A full height glazed atrium separating the front elevation from the entrance hall at ground floor and the waiting areas on the upper floors. Facades were clad with Cadeby Limestone to street elevations with render and exposed brickwork to the rear secure yard area.

In 2008 Fife Council launched the 'Building Fife's Future' programme to renew six schools. Dunfermline High School is the first high school to be completed in this programme. The brief was for a new school serving 1,800 students and extensive community use to be built in the grounds of the existing school. The construction project comprises a new school and landscaping which became operational by summer 2012. The aim of the construction brief was to deliver a bright, attractive and stimulating environment. The ultimate aim was to produce a building which should be open, transparent and easily understood to help people find their way round and promote a sense of unity and community.

HANS  
MAAK  
MICWCI



## ***Dunfermline High School***





MARTIN  
MCADAM  
MICWCI

## ***All Saints / Rochsolloch Primary School, Airdrie***



The traditionally built buildings at Alexandra/Rochsolloch Primary Schools, no longer met the educational usage needs of the 21st century from the point of view of the improved teaching/learning methodologies, nor for effective vehicular and pedestrian accessibility or for the sports and playground requirements of a modern school.

The single building houses both schools and utilises modern sustainable materials to give a modernistic theme looking forward into the future of educational developments. The roof decking and wall are aluminium clad, with coloured feature brickwork banding and windows. The schools have been designed with flexibility with regards to the Scottish Government's aims for class sizes, and changes in class sizes from term to term. The building has been designed to achieve satisfactory and realistic energy targets and to ensure the lowest CO2 emissions, consistent with Government Targets.

The project brief was to form a single primary school from an amalgamated Coltness Primary School and Lammermoor Primary School and relocate Coltness Community Centre. The scheme is designed around a hub forming the main entrance and Social/Dining space, with four wings defining the building zones. Attempting to house the required accommodation within a one storey building was not possible due to the site constraints and the increased occupancy on the site. Therefore, the central wings combine to form a 'v-shaped' two storey education block, whilst the remaining nursery and community wings are one storey. The community wing houses the sports area for the school and has a two storey element attached forming the large gym hall and community hall.

IAIN  
MORRISON  
MICWCI



## ***Calderbridge Primary / Nursery School***





**ANTHONY  
DOCHERTY  
MICWCI**

## **'Anderston' Phase 1 Glasgow**



The development at Anderston is the first in a five-phase master plan to replace four hundred and ninety five flats with new, modern and energy efficient homes. 'Phase 1' comprised one hundred and four flats and maisonettes on Argyle Street, Little Street and McIntyre Street in Glasgow and a local office for the housing association. Each five or six storey block has a lift to all floors, making the flats more accessible than their 1960's predecessors. The project was completed in July 2011.

The construction is a hybrid of traditional brick and block cavity walls (to the ground and first floor) and timber kit (to the upper floors). With a variety of different external cladding materials (facing brick, cladding panels, zinc, render-on-brick and render-on-board), and some complex geometry and levels dictated by the site conditions the project proved to be challenging in terms of construction.

The Turner Contemporary Gallery has been built on the site of the guest house where Turner stayed when he visited Margate. Being so close to the sea, waterproofing of the structure was critical in view of the valuable exhibits likely to be displayed. It ranged from totally encasing the ground beams right up to a very high specification felt roof being installed under the zinc roof sheets. Junctions at door and window openings were areas where a particularly high level of workmanship was required.

The site was unusual in that it encompassed a lifeboat station which had to be kept working 24/7. Good liaison with the RNLI ensured that there were no disruptions to the lifeboat launches. The clean and simple lines of this building mask a very complex building which was both a challenge and pleasure to work on.

**JOHN  
LONGBOTTOM  
FICWCI**



## **Turner Contemporary Gallery Margate**





**JOHN  
ROBERT  
HANNA  
FICWCI**

## ***New Science Centre Staffordshire University***



The Science Centre project within the University Quarter Programme is a £26m new building that will host a number of teaching and research areas from across the Universities current faculty structure and also from partner colleges.

The building is 10400 sqm on four floors and has a BREEAM Excellent rating and incorporates a number of sustainable technologies. It will accommodate up to one thousand students and one hundred and forty members of staff who have transferred from older buildings in the University estate.

Construction commenced in August 2010 on a site assembled via CPO after demolition of a number of obsolete buildings and handover occurred in April 2012 with the building going fully live for teaching in September 2012.

This project was to build a second tunnel crossing of the river Tyne, the existing tunnel would remain in use keeping the flow of traffic as one tunnel for south bound and one for north bound increasing the capacity by 100 percent. The immersed tunnel sections were constructed in a dry dock on the north of the river 3km up river from the tunnel location. Each section are around 90m in length; of which there are four sections which were floated out into the river and dropped/sunk into the dredged trench prepared in the river bed using a Cutter Suction Dredger. (Vesalius). Once each section was positioned in the trench each section was joined to its neighboring unit, and each end of the tube was then connected to the cut and cover tunnels north and south of the river.

These were constructed using various types of excavation techniques bottom up, top down and sprayed concrete lining SCL, depending on ground conditions and existing services.

**STEPHEN  
TELFORD  
MICWCI**



## ***Tyne Tunnel Crossing Newcastle Upon Tyne***





**ANTHONY  
HUNTER  
FICWCI**

## ***Institute of Transplantation Freeman Hospital, Newcastle***



Newcastle Hospitals has a long and successful history of caring for the most clinically compromised patients. The Institute of Transplantation is one of only four such medical centres of excellence in the world.

The building is a concrete frame with structural columns and insitu cast concrete floors with a basement of half the ground buildings floor plan.

The exterior of the building is clad with brick and copper panels with the installation and control being to a high standard, which complements the high standards of the internal courtyards.

The University of Leicester approached Brimelow McSweeney Architects with a demanding set of requirements. They needed a world class sports facility to cater for students, staff and the local community in Oadby, Leicester, but also a facility that would be self-financing by producing an income from membership fees that will cover the full costs of running the facility. This has been fully achieved, along with fulfilling the Universities' policy that all new buildings were to be constructed to achieve a BREEAM rating of Excellent. The development is set within a conservation area and overlooks a large area of open land and the University running track, so would be highly visible to everyone who approached the site. For this reason the long views were carefully considered by all parties. Achieving planning permission for such a large scheme was a lengthy and involved process with numerous consultation meeting with the Local Authority, interest groups and the local residents. These meetings were very positive and after much discussion all were pleased with the finished design.

**MARK  
HEGGS  
MICWCI**



## ***Manor Road Sports Facility Leicester***



# *Programme*

## Reception

Opening Welcome and  
Introduction to Building on Quality Awards  
Mr Meredith Whilden FICWCI

Review of Entries  
Mr Meredith Whilden FICWCI

Presentation of Awards  
Mr Meredith Whilden FICWCI

## Dinner

Presidents Address by  
Mr Tony Hickton FICWCI

Guest Speaker  
Mr Stephen Hodder MBE

Toastmaster  
Mr Graham Penny FICWCI

# *Menu*

## **Starter**

*Grilled Brinkburn Goats Cheese  
and Roquette Salad*



## **Main Course**

*Seared Pork Loin with Mushroom  
and Calvados Jus*



## **Dessert**

*Tia Maria and Chocolate Mousse*

*Coffee and mints*

# Guest Speaker

*Stephen Hodder was educated at the School of Architecture, University of Manchester, where he gained a Distinction in the Bachelor of Architecture degree. Following University he joined Building Design Partnership in 1981 and became a member of the Royal Institute of British Architects in 1982.*

*He has been in practice since 1983 and in 1992 formed Hodder Associates which won the Royal Fine Art Commission / Sunday Times Building of the Year Award for Colne Swimming Pool in Lancashire later that year. Shortly afterwards he won a limited competition to extend Arne Jacobsen's Grade I Listed St. Catherine's College in Oxford and established a client relationship which has now extended for some fifteen years.*

*In 1996 Hodder Associates received the most important award in British Architecture for a single building, the inaugural Stirling Prize for Architecture for the Centenary Building, University of Salford. The Practice has now won over thirty major awards, the most recent being an RIBA Award for St. Catherine's College Phase II in 2006. The practice has realised significant projects in the leisure, cultural, residential, and commercial sectors, together with the higher education sector. Current UK projects include office buildings at 3 St. Paul's Place, Sheffield, for CTP St. James and 4 Piccadilly Place, Manchester for Argent Estates, St Clare's College, Oxford, Tynemouth Station, and the redevelopment of Gateway House / Station Approach, Manchester.*

*Professionally, he has been President of the Manchester Society of Architects, RIBA North West Region Chairman, and a member of the RIBA Awards committee. He is a Nationally Elected Member of RIBA Council, a past member of the Education Committee and Conservation Register Steering Group, and is currently Vice President for Nations and Regions. He sits on Design Review Panel for both CABE and Places Matter!*

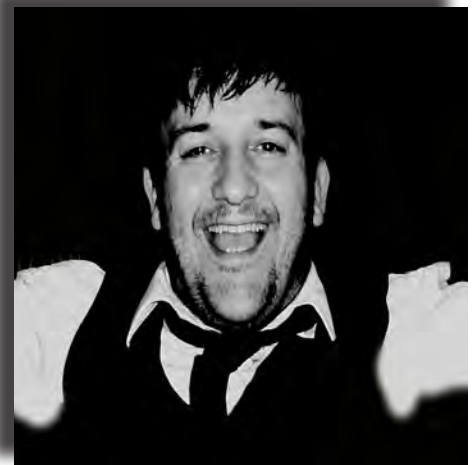
*Stephen has written and lectured widely, has been a visiting examiner at a number of schools of architecture and was until recently the visiting professor at the Birmingham School of Architecture. He regularly acts as an assessor for architectural competitions and awards systems, most recently chairing the Pennine Lancashire Squared Competition.*

*Stephen was awarded an MBE for services to architecture in the Queens Birthday Honours List, 1998. He received an honorary doctorate in 2006 from the Manchester Metropolitan University for his regional, national and international contribution to architecture and won the Roses Design Award of 'Architect of the Year' in the same year.*



**Stephen Hodder MBE**

*Tonight's entertainment is provided by singer Chris Dakers. Over the years Chris has been lucky enough to entertain a lot of happy and fantastic North East wedding couples. With songs made famous by 'The Rat Pack' and 'Michael Buble' and many others, Chris has something for every audience. Voted one of the North East's wedding singers of the year, Chris is a true pro and will bring the swing and soul to the party.*



A new two storey business and enterprise centre of 940m<sup>2</sup>, BG Futures aims to address a need identified in key policies at local, regional, national and EU level to provide crucial business incubator facilities. Primarily grant funded by the ERDF, together with contributions from Lincolnshire County Council, Lincolnshire Enterprise, and investment from BGUC, the BG Futures scheme has built on the success of a pilot scheme run over the preceding three years. By developing a facility capable of bringing those businesses together under one roof, the client team were aiming to create an environment in which start-up enterprises can flourish through networking opportunities. These aspects would then be complimented by the more formal support mechanisms provided through the Enterprise Development Manager and a pool of professionals from a broad range of specialism's prepared to provide their advice on a pro-bono basis.

ROY  
BEER  
MICWCI



***BG Futures  
Bishop Grosseteste University***



CAROL  
HEIDSCHUSTER  
MICWCI

***South West Turret  
Lincoln Cathedral***



In 2010 Lincoln Cathedral commenced a five year programme of restoration work on the C13 turrets at the north and south corners of the West Front. The project is year one of major conservation works to the South West Turret. The turrets are very exposed to wind, weather and pollution. The masonry had been monitored annually by abseil inspection, which had revealed serious erosion. The South West Turret is immediately above a public roadway and footpath, and overlooks the main entrance to the Cathedral. There were concerns that the erosion could create a public hazard, and the restoration work was given the highest priority. The scope of the work is conservation cleaning and masonry repairs. Many of the stones were found to be damaged beyond repair and have been replaced. The majority of these are complex architectural masonry, and the setting out presented great challenges. The team worked from the top of the turret downwards.



**COLIN  
PEARSON  
FICWCI**

## ***School of Humanities University of Cambridge***



We have recently completed our works to undertake the design and construction of the new school of Humanities, Social Sciences and Arts at West Road, Cambridge (to be known as The Alison Richard Building) for a long-standing client, the University of Cambridge.

The aim of the project was to create a four storey insitu concrete framed building with a basement, to form a teaching, research and library block for the University of Cambridge. The project is on target to achieve a BREEAM rating of Excellent, and we also incorporated the initiatives of WRAP into the project. The initial design, only allowed for the building to reach BREEAM Very Good standard and through collaborative working we have been able to achieve the new requirement. As well as dedicated research areas there is a café, a suite of shared seminar rooms and open plan post graduate areas. The atrium acts as an important reception area for national and international visitors as well as a hub for conferences and exhibitions. The ground floor, including the café, will be open to all Sidgwick site, University and College users.

Taff Bargoed Park and Lakes has been reclaimed from an area where three previous collieries were situated and transformed into a nature reserve with country walks, fishing, kayak and canoe sport for both able and disabled participants.

A platform system was the most obvious choice providing level and non-slip areas protruding into the lake. Due to a lining to the lake bottom supporting the platforms with green oak piles was not possible, so a method of gabion stone filled frames or similar to sit on a bed of fine stone was the answer and would not penetrate the lining.

One of the platforms was to enable disabled access for Kayak and Canoe Slalom team events.

Access to the park with disabled parking and turning circle for disabled coaches were also included.

**TONY  
SMITH  
FICWCI**



## ***Taff Bargoed Park and Lakes***





**JAMES E  
HAUGHIAN  
MICWCI**

## ***Jordonstown School County Antrim***



Jordanstown is a school and centre of excellence for children with auditory and visual impairments, situated in 6 acres of ground in a quiet and mainly residential area. The central area of the main building is the two storey secondary school section and adjoining and around it are one storey areas, such as the Hydro therapy pool, administration and primary school buildings, dining area, kitchen, multi purpose hall and science areas.

The building facade at the frontal area has a striking and colourful appearance, and these vibrant colours are used around the buildings, obviously with the children in mind. The main building is steel framed, resting on reinforced pad and strip foundations. The external masonry walls are either a buff coloured facing brick, rendered, or of block work cloaked in cladding.

## ***Twin Sails Bridge Poole***

**FRANK  
MILLER  
MICWCI**



After some twenty years in the planning, this is a totally unique design. The bridge spans Back Water Channel in Holes Bay between Hamworthy and Poole town centre. The £37 million project, partly funded by central government, provides a new gateway into Poole from the west, and takes some of the strain from the existing Victorian lifting bridge, as the new bridge is further up the harbour mouth.

The scheme has brought redevelopment of the existing brown field sites which once sited a power station around the bridge touchdowns, and has further raised the profile of the town that has grown up around the second largest natural harbour in the world with Sydney being the largest. The Twin Sails Lifting Bridge is part on an ambitious regeneration project that brings with it a stunning and iconic second harbour crossing, new homes, employment opportunities and public open spaces. The bridge sits on fifty-plus piles, up to 1.5m in diameter, placed some thirty three metres under the sea bed. These support the steel bridge itself, and were moved to site in several sections by road, a process which took several days. It was then floated into place using the tides to assist with some of the work.





GILLY  
CARR  
FICWCI

## Les Beacamps High School Guernsey



The existing school has been replaced with a building that gives great pleasure and inspiration in which to teach and be taught; this has been achieved with extensive foresight and input from an experienced Client along with a Design team who worked for a number of years prior to going to tender. This enabled the majority of the employers requirements to be met when the school opened.

The brief asked for a school which would have as little as possible impact on the environment, this was met by designing and constructing the classrooms to incorporate exposed concrete soffits to limit summertime overheating and improve heat retention in the winter. The top floor classrooms incorporate high pitched roofs which will also improve air circulation in the summer.

## JOHN BURKE ASSOCIATES



### Profession Private Practice: Nationwide & International

John Burke Associates provide Independent Third Party Construction Inspection, Building, Civil, M&E Clerk of Works and NEC Supervisor services. We also undertake a full range of Building & Quantity Surveying Services, Project Management, Employer's Agent, CDM-C and Party Wall Surveying appointments.

We are an environmentally committed and quality driven Practice, certified to ISO 14001:2004, ISO 9001:2008 and are accredited by Constructionline, CHAS and Exor.

John Burke Associates have over 30 years experience and are regulated by the Royal Institution of Chartered Surveyors and The Chartered Institute of Building. We provide a complete range of bespoke services to Clients seeking risk reduction on building and infrastructure projects.

Our aim is to pro-actively assist the Client, Contractor and Design Team to realise a "zero defects" project environment.

Site Quality Inspection Services are headed up by Ian Carey, who is a Fellow and Past President of the Institute of Clerk of Works & Construction Inspectorate.

All services are underwritten by our professional indemnity insurance.

Contact: **Ian Carey** CMgr MSc DMS PgDip FRICS FCIQB FCMI FICWCI FBEng Or **Stephen Burke** BSc (Hons) MRICS ACIarb MAPM

**Head Office**  
Design House  
117 Belgrave Avenue  
Romford  
RM2 6PS

**London Office**  
60 Lombard Street  
London  
EC3V 9EA

**Milton Keynes Office**  
Exchange House  
494 Midsummer Boulevard  
Milton Keynes  
MK9 2EA

**Dubai Office**  
PO Box 282486  
354 Sheikh Zayed  
Road  
Dubai

**Abu Dhabi Office**  
PO Box 43273  
Khalifa Street  
Abu Dhabi

Tel: 01708 770770

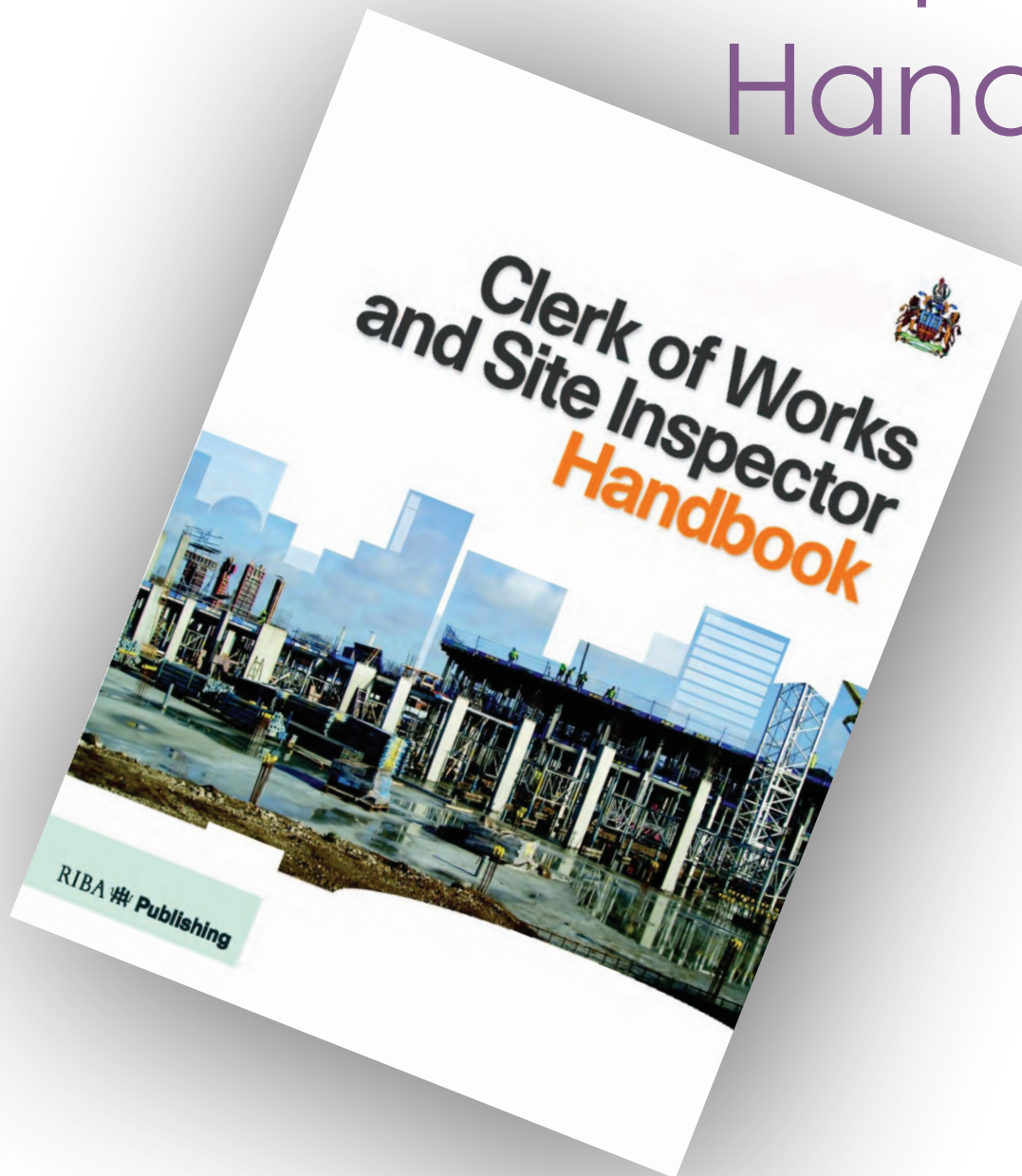
Fax: 01708 770759

E-mail: [office@jba.uk.com](mailto:office@jba.uk.com)

Web: [www.jba.uk.com](http://www.jba.uk.com)



# Clerk of Works and Site Inspectors Handbook



**Clerk of Works and Site Inspectors Handbook - the in depth reference guide to the role of the Clerk of Works / Site Inspector, clarifying the role and relationship with the client, architect and other construction professionals.**

**Cost: £32.00 (ICWCI Members), £39.95 (non Members).  
Postage per copy - UK: £3.00, Europe (airmail): £4.50, other overseas (airmail): £8.00**

**To order your copy, please contact ICWCI Headquarters by calling 01733 405160 or by emailing [info@icwci.org](mailto:info@icwci.org)**

Since 1985 FCM have been providing a first class Clerk of Work Services, for many of London's Finest Buildings both Ancient and Modern and also operate a countywide service

All FCM's staff are members of ICWCI and have the support and backup of their respective Directors who receive weekly reports on each project and attend monthly meeting with the Client.

Clients include: Home Office, UCL, FCO, HMRC, KCL, Thomson Reuters, Deutsch Bank.

## ***FCM-Fox Curtis Murray***

CLERK OF WORKS SERVICES

Chartered Building Services Consultants

Surveyors and Project Managers

Offices in London and Oxford

Tel: (020) 7323 5758

Fax: (020) 7323 5859

Enquiries: [FrancisMurray@fcmltd.co.uk](mailto:FrancisMurray@fcmltd.co.uk)



SOMERSET HOUSE

LANCASTER HOUSE

THE ROYAL SOCIETY

THE LONDON CENTRE OF  
NANOTECHNOLOGY

THE UCL CANCER INSTITUTE -  
PAUL O'GORMAN BUILDING

NEW ENGINEERING BUILDING

NEW CABINET OFFICE

ADMIRALTY ARCH

TRANSPORT FOR LONDON  
ADMINISTRATIVE BUILDINGS

CUNARD BUILDING - LIVERPOOL



**Coming soon...**

New website [www.fcmltd.co.uk](http://www.fcmltd.co.uk)

# Geordie Phrasebook

CANNY

*Used to positively describe a number of things, most often used to compliment a person, as in 'That is a Canny Clerk of Works.'*

DIVVENT

*Meaning 'do not' or 'did not'. As in 'divvent worry, we have just the Clerk of Works for you'.*

HOWAY!

*Exclamation of 'come on!'. As in 'Howay the Building on Quality Awards!'*

CHAMPION

*Used to describe something as good, brilliant, etc. As in 'The Clerk of Works on our site is champion'*

MARRA

*Meaning 'friend'. As in 'to a Geordie, a stranger is just a marra they haven't met yet.'*

ALREET?

*Greeting, meaning 'How are you?'*

*The ICWCI would like to  
thank our sponsors*



HIGH PERFORMANCE  
TILING AND FLOORING PRODUCTS



F C M

Fox Curtis Murray





We are delighted to be supporting the Institute at their annual Conference 2013



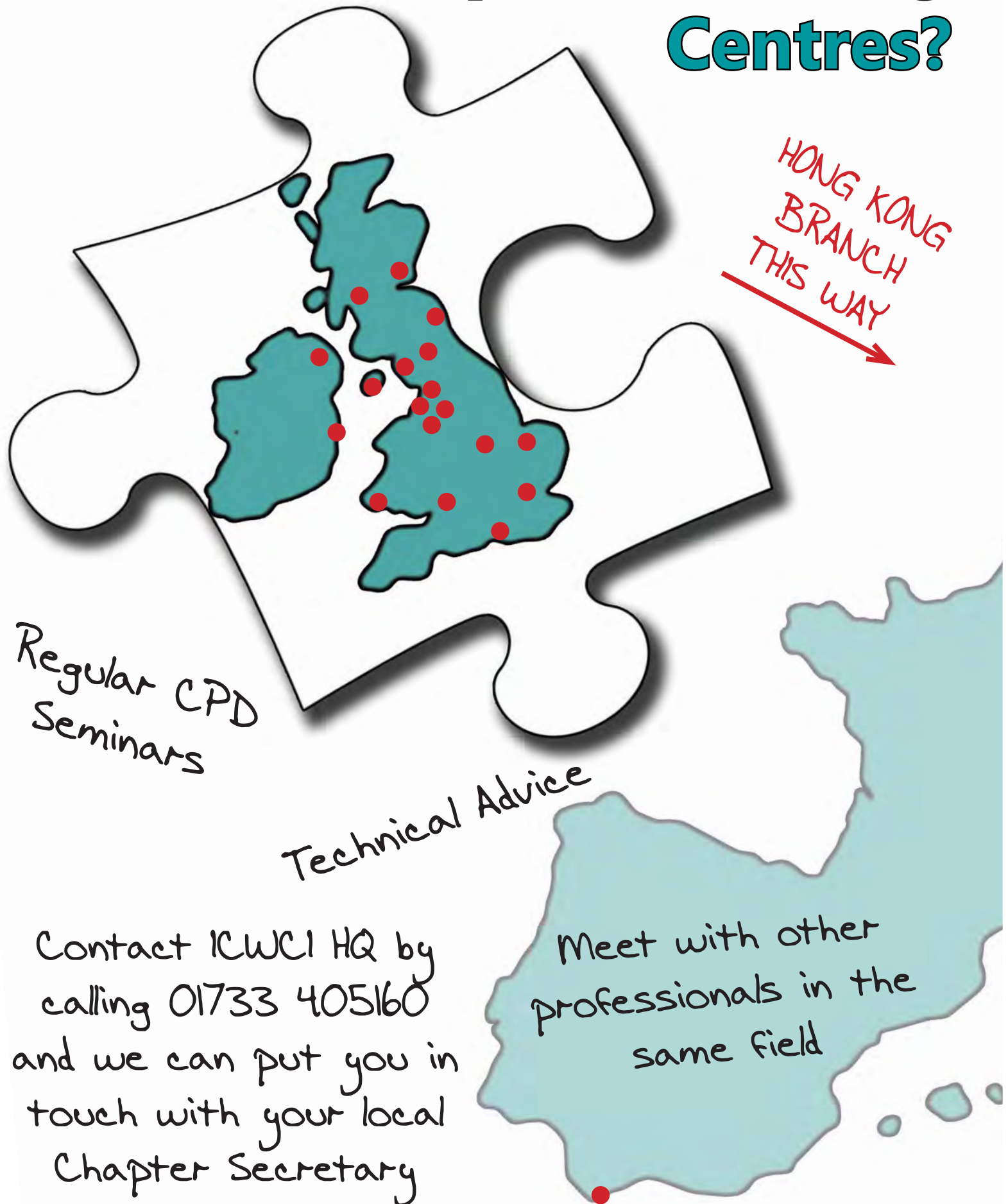
We wish you all a very enjoyable evening and know that you will join us in a toast to all the clients and construction teams who understand the added value a good Clerk of Works brings to a project.



**Tel: 01226 743959**  
**Email: [info@hickton.co.uk](mailto:info@hickton.co.uk)**  
**Web: [www.hickton.co.uk](http://www.hickton.co.uk)**



# When did you last visit your local Chapters/Meeting Centres?



HONG KONG  
BRANCH  
THIS WAY

Regular CPD  
Seminars

Technical Advice

Meet with other  
professionals in the  
same field

Contact ICWCI HQ by  
calling 01733 405160  
and we can put you in  
touch with your local  
Chapter Secretary